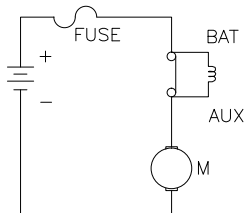


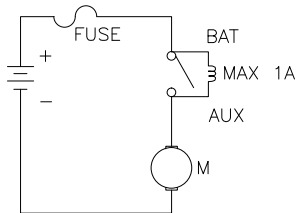


PART NO.	VOLTS	AMPS
CB151-10	6 to 12	10
CB151-15	6 to 12	15
CB151-20	6 to 12	20
CB151-25	6 to 12	25
CB151-30	6 to 12	30

REVISIONS			
REV #	DESCRIPTION	DATE	APPROVED
1	ISSUED	11/29/2017	R.M.
2	ADDED NOTES/DIAG, REVISED DIMENSIONS	12/08/2017	R.M.



CIRCUIT DIAGRAM BEFORE TRIP

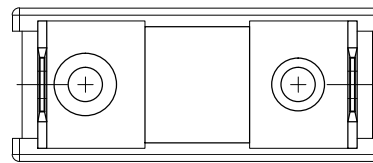


CIRCUIT DIAGRAM AFTER TRIP

NOTE: Open circuit current
1.0 Amp maximum

CHARACTERISTICS:

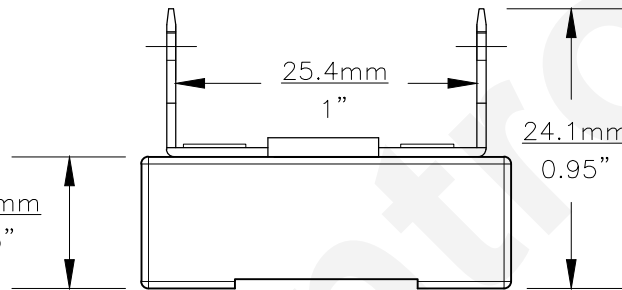
1. Load (10.15.20.25.30) Amperes.
2. Voltage 6-12 Volts.
3. Voltage Drop is less than 150MVat Rated Current.
4. Operation:
 - 4.A. Will not open. No load at 240° (116°C).
 - 4.B. Time to open @ 135% Rated Current: 30 Minutes Maximum.
 - 4.C. Time to open @ 200% Rated Current: 60 Seconds Maximum.
 - 4.D. Hold 100% rated current continuously for a minimum of 30 minutes.



TOP VIEW

13.0mm
0.511"

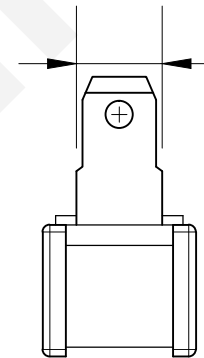
7.45mm
0.293"



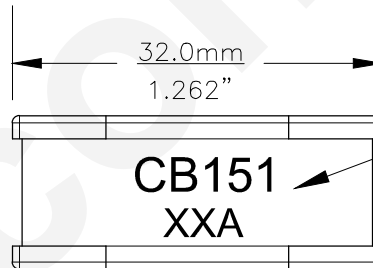
0° VIEW

11.35mm
0.45"

24.1mm
0.95"



90° VIEW



BASE BOTTOM VIEW

CB151
XXA

Part Number
Amps



UNLESS OTHERWISE SPECIFIED: DIMENSIONS ARE IN INCHES TOLERANCES DECIMALS .XX ± .05 ANGULAR ± 0.5° .XXX ± .010 FRACTIONAL ± 1/64		CEC INDUSTRIES LTD 599 BOND STREET LINCOLNSHIRE, IL 60069			
DRAWN ROSE MEDINA	DATE 11/29/2017	TITLE LIGHT BULB NO. CB151-Series			
CHECKED		SIZE A	FSCM NO.	DWG NO. CB151-Series	REV 2
DESIGN		SCALE	PLOT SCALE		SHEET 1 of 1
MATERIAL		FILE CB151-series.pdf	DRAWING NOT TO SCALE		