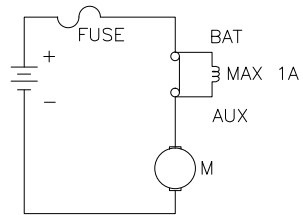


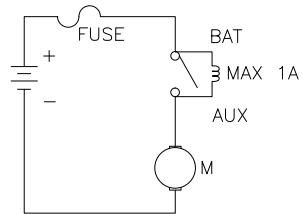


PART NO.	VOLTS	AMPS
CB150-10	6 to 12	10
CB150-15	6 to 12	15
CB150-20	6 to 12	20
CB150-25	6 to 12	25
CB150-30	6 to 12	30

REVISIONS			
REV #	DESCRIPTION	DATE	APPROVED
2	REDRAWN AND ADDITIONAL SPECIFICATION	10/19/2007	S.L.
3	REDRAWN, REVISED VOLTS AND DIMENSIONS	12/08/2017	R.M.

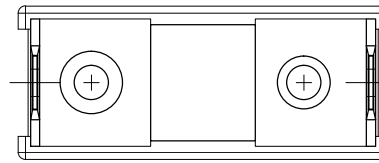


CIRCUIT DIAGRAM BEFORE TRIP



CIRCUIT DIAGRAM AFTER TRIP

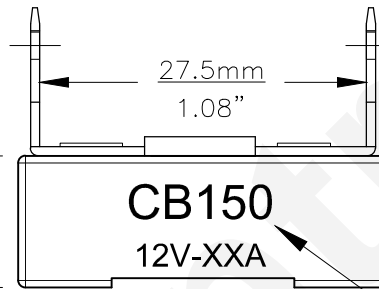
NOTE: Open circuit current
1.0 Amp maximum



TOP VIEW

13.0mm
0.511"

7.45mm
0.293"



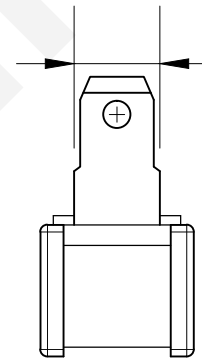
CB150
12V-XXA

0° VIEW

11.35mm
0.45"

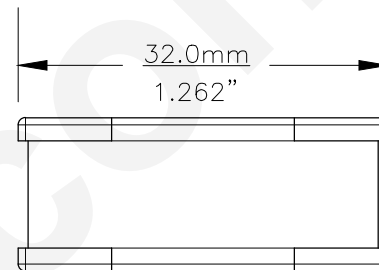
27.5mm
1.08"

24.1mm
0.95"



90° VIEW

Part Number
Volts-Amps



BASE BOTTOM VIEW

32.0mm
1.262"

CHARACTERISTICS:

1. Load (10.15.20.25.30) Amperes.
2. Voltage 6-12 Volts.
3. Voltage Drop is less than 150MVat Rated Current.
4. Operation:
 - 4.A. Will not open. NO load at 240° (116°C).
 - 4.B. Time to open @ 135% Rated Current: 30 Minutes Maximum.
 - 4.C. Time to open @ 200% Rated Current: 60 Seconds Maximum.
 - 4.D. Hold 100% rated current continuously for a minimum of 30 minutes.



UNLESS OTHERWISE SPECIFIED: DIMENSIONS ARE IN INCHES TOLERANCES		CEC INDUSTRIES LTD	
DECIMALS .XX ± .05	ANGULAR .XXX ± .010	599 BOND STREET	LINCOLNSHIRE, IL 60069
FRACTIONAL ±1/64		TITLE LIGHT BULB NO. CB150-Series	
DRAWN ANNA SOLOVEYCHIK	DATE 02/06/2002	SIZE A	FSCM NO. DWG NO. CB150-Series REV 3
CHECKED		SCALE	PLOT SCALE SHEET 1 OF 1
DESIGN		MATERIAL	FILE CB150-series.pdf DRAWING NOT TO SCALE