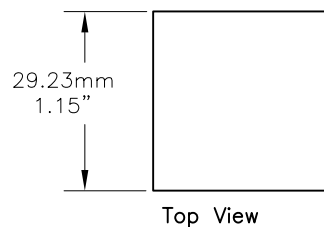


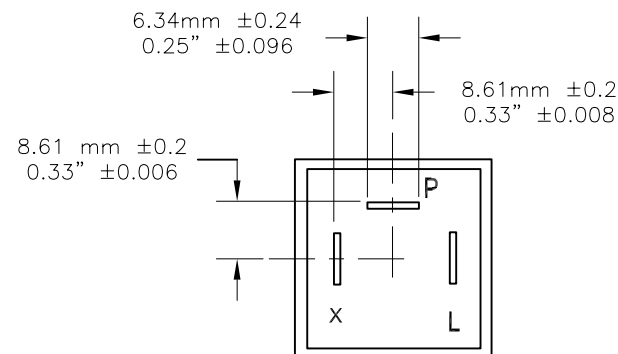
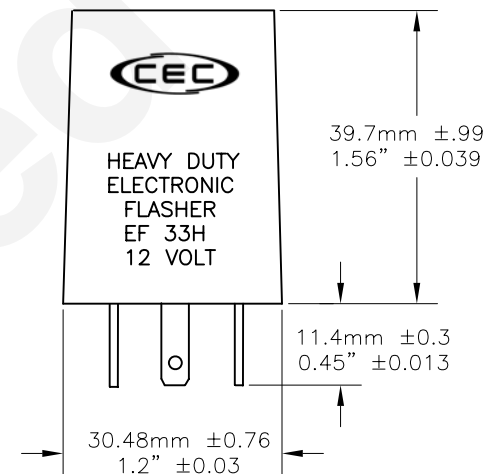
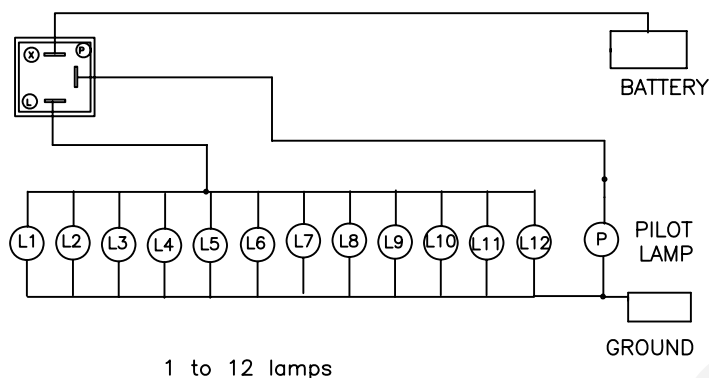
PART NO.	NO. OF TERMINALS	TYPE	STYLE	VOLT CAPACITY
EF33H	3	Variable Load	Square	11–15V

REVISIONS			
REV	Change Description	Date	Approval
1	Additional electrical specifications added	6/17/2002	
2	Additional dimensions added	6/18/2002	
3	Addition of back view w/text	12/17/2004	D.C.



TEXT
(back view)

HEAVY DUTY
INPUT LEAD MUST
BE FUSED
SAE J945 J590
J1690
MAX 25 AMPS
DOT



Specifications: FMVSS 108 SAE J590 J945&J1690 Class A
Rated for 100 hours of continuous operation

Shell Construction: Plastic

Rated Load: 1 to 12 lamps / 25 Amps. MAX

Lamp Ratings: (1) No. 1157, 2.10 Amps at 12.8 Volts
(12) No. 1157, 25 Amps at 12.8 Volts

Temperature Operating Range: -25°F to 140° F

Rated Voltage: 11 to 15 Volts DC.

Voltage Drop at Rated Current: 500 mv

Time to First Flash: Less than 1.5 seconds.

Flash Rate over Temperature Range: 60 to 120 Flash Per Minute

Duty Cycle: 30% to 75%

Electrical Source: 25 Amps. Input lead must be fused.

L Terminal = Load (Lamp Output)

X Terminal = Battery (Power Input)

P Terminal = Pilot Lamp.

UNLESS OTHERWISE SPECIFIED:
DIMENSIONS ARE IN INCHES
TOLERANCES

DECIMALS ANGULAR
.XX ± .05 ± 0.5°
.XXX ± .010
FRACTIONAL ±1/64

DRAWN Anna Soloveychik	DATE 06/07/2002
CHECKED	
DESIGN	
MATERIAL	

CEC INDUSTRIES LTD

599 BOND STREET

LINCOLNSHIRE IL 60069

TITLE

ELECTRONIC FLASHER EF33H

SIZE A	FSCM NO.	DWG NO. FLASHER EF33H rev3	REV 3
SCALE	PLOT SCALE	SHEET 1 OF 1	
FILE EF33H rev3.DWG	DO NOT SCALE DRAWING		